



DESHABANDHU MAHAVIDYALAYA, CHITTARANJAN

NAAC Accredited B + College

(Affiliated to Kazi Nazrul University)

Recognised Under Section 2(f) & 12(B) of UGC

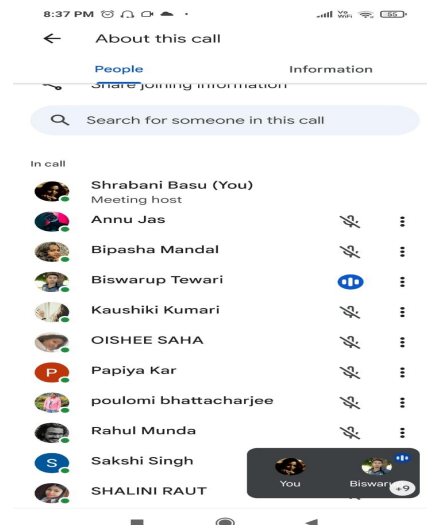
P.O. – Chittaranjan, District – Paschim Bardhaman, West Bengal,
India, PIN – 713 331

Student Centric Methods, Teaching-Learning Methodologies and ICT Enabled Tools

Deshabandhu Mahavidyalaya, Chittaranjan has always experimented with various teaching-learning strategies, in an effort to make the learning process more student-centric. Various practical, hands-down approaches in learning were always in place, and newer methods of learning like invited lectures, audio-visual inputs etc. are included in everyday teaching. In the past few years, especially due to the onslaught of the Covid-19 imposed lockdown, the methods of teaching-learning exercises became increasingly ICT enabled and dependant on various strategies of remote learning. Besides, with a committed effort to incorporate outreach programmes and community awareness amongst the students, the The following student centric methods to enhance ongoing learning experience were adopted in pertinent contexts to provide outcome based education:

1. ICT Enabled Teaching methods: Before and during the Covid-19 pandemic, a range of experimental ICT enabled teaching methods were adopted by the members of the faculty, and were later continued in the offline classes as these methods wer found extremely effective for student engagement. Some of these were:

- **Online classes:** Regular, routine based online classes were held with Zoom and Gmeet platforms. Certain recorded lectures were also shared with students during the early weeks of the lockdown. Many of these methods continued even later for after-hours student engagement.





DESHABANDHU MAHAVIDYALAYA, CHITTARANJAN

NAAC Accredited B + College

(Affiliated to Kazi Nazrul University)

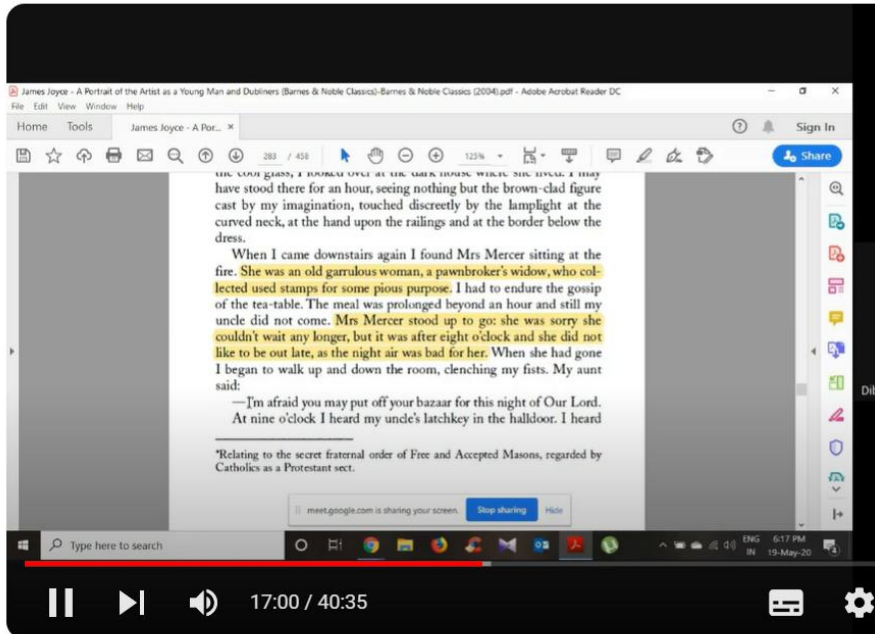
Recognised Under Section 2(f) & 12(B) of UGC

P.O. – Chittaranjan, District – Paschim Bardhaman, West Bengal,
India, PIN – 713 331



YouTube^{IN}

Search



Sem 4 joyce 3

Unlisted



Shrabani B...
73 subscribers

Analytics

Edit video



1



- Audio-visual methods- Besides PPT and AV clips, certain images and charts were also used for regular classes with the help of Smart classrooms.

Outline Slides

7 Edward Lear


8

9 Sukumar Ray (30 October 1887 – 10 September 1923)

- Son of Gollon, a well-known publisher and editor. He was the father of Indian filmmaker Satyajit Ray.
- Author of 100 poems and 1000 short stories.
- Wrote in Bengali, English, Hindi, and Urdu.
- Known for his witty and satirical poems and stories.
- Considered one of the greatest Bengali poets.
- His poems are known for their wit and humor.
- He was a pioneer of the modern Bengali poetry.
- He was also a writer of children's books.
- He was a member of the Indian National Congress.
- He was a member of the Indian Literary Society.
- He was a member of the Indian Association of Calcutta.
- He was a member of the Indian Association of Bombay.
- He was a member of the Indian Association of Madras.
- He was a member of the Indian Association of Calcutta.
- He was a member of the Indian Association of Bombay.
- He was a member of the Indian Association of Madras.

10

Click to add title



- Three types of writings:
 - Exaggerated experience (poems like “Gauner Guto”, “Gnowf Churi” etc.)
 - Fantastic and Bizarre (*Ha-Ja-Ba-ra-La*, “Tales of Heshoram Hoshiar” etc.
 - Satire and gentle mockery (“Ekushey Ain”, “Ramgorurer Chana” etc



DESHABANDHU MAHAVIDYALAYA, CHITTARANJAN

NAAC Accredited B + College

(Affiliated to Kazi Nazrul University)

Recognised Under Section 2(f) & 12(B) of UGC

P.O. – Chittaranjan, District – Paschim Bardhaman, West Bengal,

India, PIN – 713 331

- Google forms and online Quizzes: Quizzes and Impromptu evaluations are conducted with Google forms

SEM VI DSE 4 INTERNAL EXAM-2022

Science Fiction and Detective Literature

basushrabani85@gmail.com [Switch accounts](#)

* Indicates required question

Email *

Your email address

All Questions are Compulsory
FM- 10 TIME: 25M

Name: *

Your answer

- Google classrooms-- Student assignments, records and classwork are often scrupulously recorded in Google classrooms to avoid paper clutter.

Classroom > English Honours Sem6 DBM

Home
Calendar
Teaching
To review
Sem 4 Hons English DBM A
Sem 2 GE
2016 and 2017 backlog
English DSE 5th sem
Sem 6 Hons DBM A
English Honours Sem6 DBM A
4th Guru Dakshata Faculty I... Dr. Shrabani Basu
3rd Sem English core

Stream Classwork People Marks

A

Class code
pdjz6tt

Upcoming
No work due in soon
[View all](#)

Announce something to your class

Shrabani Basu
13 May 2022
<https://forms.gle/c5bZkL7ha56dghEh9>

Add class comment...

PRITAM DAS posted a new assignment: <https://docs.google.com/forms/d/e/1FAIp...>
12 May 2022

PRITAM DAS posted a new assignment: <https://quizzory.in/id/627be1f57cf5316af...>



DESHABANDHU MAHAVIDYALAYA, CHITTARANJAN

NAAC Accredited B + College

(Affiliated to Kazi Nazrul University)

Recognised Under Section 2(f) & 12(B) of UGC

P.O. – Chittaranjan, District – Paschim Bardhaman, West Bengal,
India, PIN – 713 331

2. Student Centric Community Outreach Programmes: The Institute implemented various awareness programs such as Thalassemia, Female Education and Sensitization, Covid 19 hygiene and prevention, Water harvesting etc. in collaboration with different departments and local govt. Or non-govt. Bodies.





DESHABANDHU MAHAVIDYALAYA, CHITTARANJAN

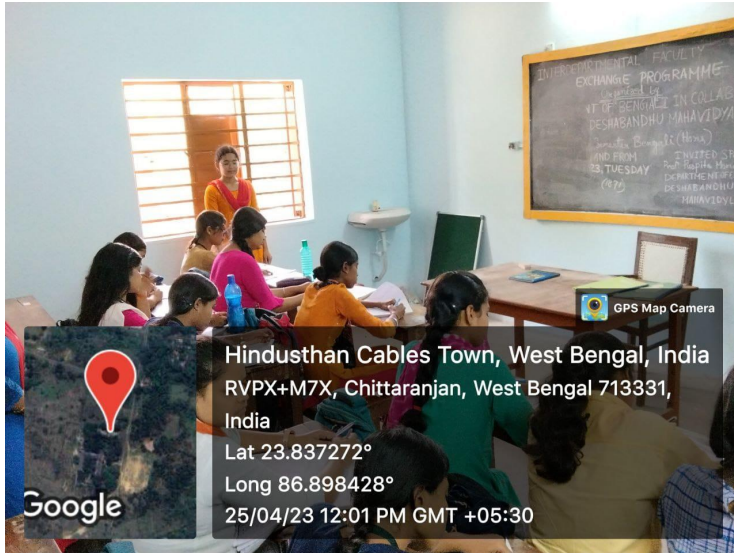
NAAC Accredited B + College

(Affiliated to Kazi Nazrul University)

Recognised Under Section 2(f) & 12(B) of UGC

P.O. – Chittaranjan, District – Paschim Bardhaman, West Bengal,
India, PIN – 713 331

3. **Experimental learning**-- Practical experiments in various lab based subjects and hands-down methods of learning is adopted by various Departments.



4. **Participative Learning**: Inter and Intra College events such as debate, paper presentation, NSS activities are also used by the Institutes and various cells for immersive student learning activities.





DESHABANDHU MAHAVIDYALAYA, CHITTARANJAN

NAAC Accredited B + College

(Affiliated to Kazi Nazrul University)

Recognised Under Section 2(f) & 12(B) of UGC

P.O. – Chittaranjan, District – Paschim Bardhaman, West Bengal,
India, PIN – 713 331




(Tridib Santapa Kundu)
Principal
Principal
Deshabandhu Mahavidyalaya
Chittaranjan